

IM-B095-02

Panasonic[®]

Operating Instructions
(Household) Rechargeable Shaver
Model No. ES-RT51/ES-RT31



Before operating this unit, please read these instructions completely and save them for future use.

Important

► Before use

This WET/DRY shaver can be used for wet shaving with shaving lather or for dry shaving. You can use this watertight shaver in the shower and clean it in water. The following is the symbol of Wet shaver. The symbol means that the hand-held part may be used in a bath or shower.



Treat yourself to wet lather shaves for at least three weeks and notice the difference. Your Panasonic WET/DRY shaver requires a little time to get used to because your skin and beard need about a month to adjust to any new shaving method.

► Using the shaver

Caution


The outer foil is very thin and can be damaged if not used correctly. Check that the foil is not damaged before using the shaver. Do not use the shaver if the foil etc. is damaged as you will cut your skin.


► Charging the shaver

Do not use any power cord or AC adaptor other than one specifically designed for this model. Use the RE7-51 adaptor only for ES-RT51/ES-RT31 shaver. Plug in the adaptor into a household outlet where there is no moisture and handle it with dry hands. The shaver may become warm during use and charging. However, this is not a malfunction. Do not charge the shaver where it will be exposed to direct sunlight or other heat sources. Hold the adaptor when disconnecting it from the household outlet. If you tug on the power cord, you may damage it. The supply cord cannot be replaced. If the cord is damaged,

the appliance should be scrapped.

Adequate ambient temperature for charging is 0-35 °C.

For model ES-RT51, if the plug symbol  does not glow initially when the shaver is plugged in, wait for a short while until it does.

For model ES-RT31, if the plug symbol  does not glow initially when the shaver is plugged in, wait for a short while until it does.

► Cleaning the shaver

Warning

Disconnect the power cord from the shaver before cleaning it in water to prevent electric shock.

Keep both the inner blades inserted. If only one of the inner blades is inserted, the shaver may be damaged. If you clean the shaver with water, do not use salt water or hot water. Do not soak the shaver in water for a long period of time. Wipe it with a cloth dampened with soapy water. Do not use thinner, benzine or alcohol.

► Storing the shaver

Disconnect the power cord when storing the shaver. Do not bend the power cord or wrap it around the shaver. This appliance is not intended for use by persons (including children) with reduced physical, sensory or mental capabilities, or lack of experience and knowledge, unless they have been given supervision or instruction concerning use of the appliance by a person responsible for their safety. Children should be supervised to ensure that they do not play with the appliance. Keep these operating instructions in a safe place.

SPECIFICATIONS

Power source: See the name plate on the product.

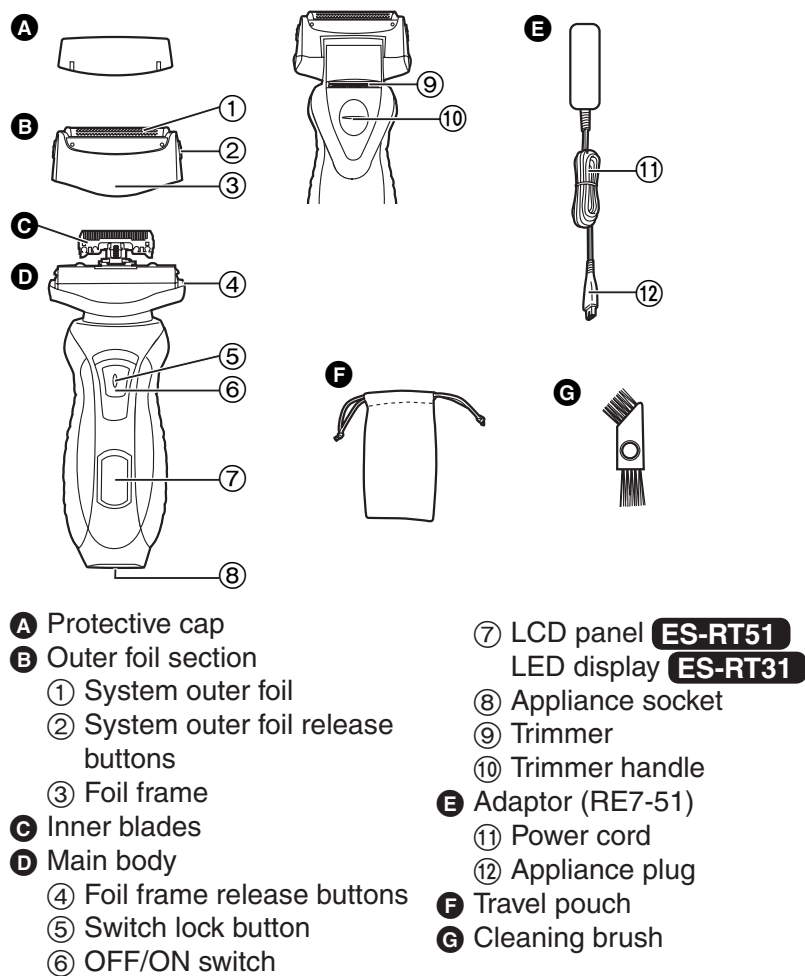
(Automatic voltage conversion)

Motor voltage: 2.4 V DC

Charging time: 1 hour


This product is intended for household use only.

Parts identification





Charge

Charging the shaver

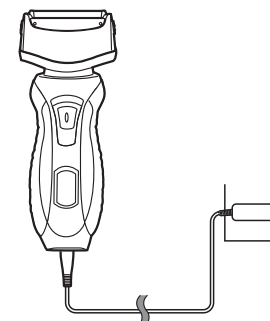
ES-RT51 The battery capacity is low when “0%” appears and  blinks.

You can shave 1 to 2 times after “0%” appears.
(This will differ depending on usage.)

ES-RT31 The battery capacity is low when  blinks.
You can shave 1 to 2 times after  blinks.
(This will differ depending on usage.)

- A full charge will supply enough power for approx. 14 shaves of 3 minutes each.

- 1** Insert the appliance plug into the shaver.
- 2** Plug in the adaptor into a household outlet.



You cannot operate the shaver while charging.

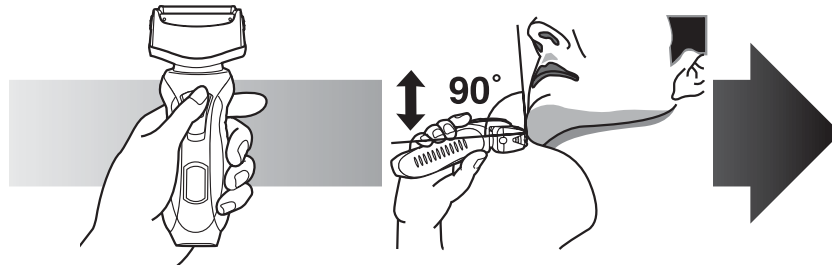
About the LCD panel or the LED display

While charging		After charging is completed	
ES-RT51	ES-RT31	ES-RT51	ES-RT31
glows.	glows.	The indicators blink once every second.	blinks once every second.
10 minutes after charging is completed			
ES-RT51	ES-RT31	ES-RT51	ES-RT31
The indicators blink once every 2 seconds.		blinks once every 2 seconds.	
When the battery capacity is low			
ES-RT51	ES-RT31	ES-RT51	ES-RT31
"0%" appears and blinks.		blinks.	

4

Shave

Using the shaver

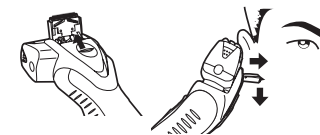


- 1** Depress the switch lock button and slide the OFF/ON switch upwards.
- 2** Hold the shaver as illustrated above and shave.

- Start out shaving by applying gentle pressure to your face. Stretch your skin with your free hand and move the shaver back and forth in the direction of your beard. You may gently increase the amount of pressure as your skin becomes accustomed to this shaver. Applying excessive pressure does not provide a closer shave.

Using the trimmer

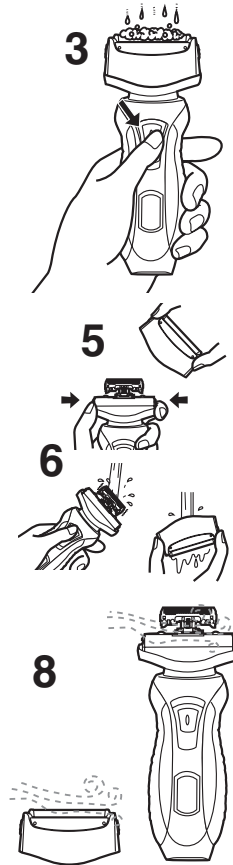
Slide the trimmer handle up. Place at a right angle to your skin and move downwards to trim your sideburns.



Clean

Cleaning the shaver

1. Disconnect the power cord from the shaver.
2. Apply some hand soap and some water to the outer foil.
3. Turn the shaver on.
4. Turn the shaver off after 10-20 seconds.
5. Remove the outer foil section and turn the shaver on.
6. Clean the shaver and the outer foil section with running water.
7. Wipe off any drops of water with a dry cloth.
8. Dry the outer foil section and the shaver completely.
9. Attach the outer foil section to the shaver.

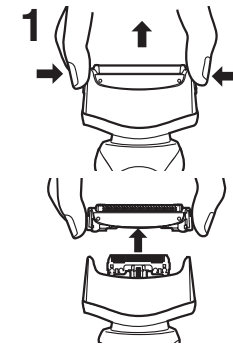


Replacing the system outer foil and the inner blades

system outer foil	once every year
inner blade	once every two years

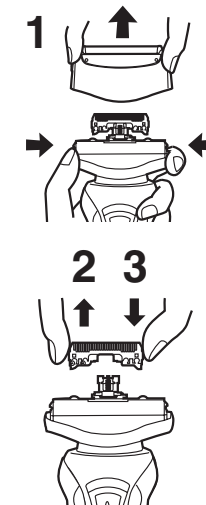
► Replacing the system outer foil

1. Press the system outer foil release buttons and lift the system outer foil upwards as illustrated.
2. Insert the system outer foil by pushing it downwards until it clicks.



► Replacing the inner blades

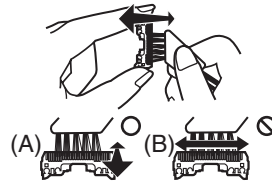
1. Press the foil frame release buttons and lift the outer foil section upwards as illustrated.
2. Remove the inner blades one at a time as illustrated.
 - Do not touch the edges (metal parts) of the inner blades to prevent injury to your hand.
3. Insert the inner blades one at a time until they click as illustrated.



Cleaning with the brush

1. Clean the inner blades using the short brush by moving it in direction (A). Clean the system outer foil, the shaver body and the trimmer using the long brush.

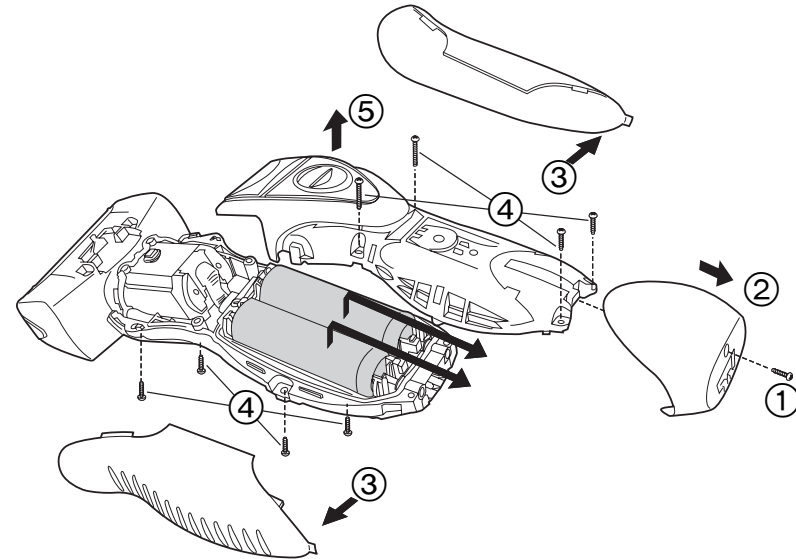
- Do not move the short brush in direction (B) as it will damage the inner blades and affect their sharpness.
- Do not use the short brush to clean the outer foils.



Removing the built-in rechargeable batteries

Remove the built-in rechargeable batteries before disposing of the shaver. Please make sure that the batteries are disposed of at an officially designated location if there is one. Do not dismantle or replace the batteries so that you can use the shaver again. This could cause fire or an electric shock. Replace them at an authorized service center.

- Disconnect the power cord from the shaver when removing the batteries.
- Perform steps ① to ⑤ and lift the batteries, and then remove them.



For environmental protection and recycling of materials

This shaver contains Nickel-Metal Hydride batteries. Please make sure that the batteries are disposed of at an officially assigned location, if there is one in your country.

Panasonic Electric Works Wanbao (Guangzhou) Co., Ltd.
<http://panasonic.net>

Ⓕ EN

Printed in China
0000000000 X0000-0