

HW-D550
HW-D551

Crystal Surround Air Track (Active Speaker System) user manual

imagine the possibilities

Thank you for purchasing this Samsung product.
To receive more complete service,
please register your product at
www.samsung.com/register



features

Active Speaker System

This unit features an Active Speaker System that provides high sound quality in a single slim unit. This unit does not require any satellite loudspeakers or speaker cabling, which are normally associated with conventional surround sound systems.

Multi-function Remote Control

The supplied remote control can be used to control the TV connected to this unit. The remote control has a TV hotkey that enables you to perform various operations with the simple press of a button.

Special Sound mode

You can select from 7 different sound modes (MUSIC, NEWS, DRAMA, CINEMA, SPORTS, GAME, PASS (Original Sound)) depending on the type of content you want to enjoy.

Compatibility with various audio Technologies

This unit employs decoders compatible with Dolby Digital and DTS (Digital Theater Systems).

- **Dolby Digital**

This is the standard audio signal format used on DVDs and other purely digital media. This surround technology delivers high-quality digital audio of up to 5.1 discrete channels to produce a directional and more realistic effect.

- **DTS (Digital Theater Systems)**

DTS provides a discrete 5.1 CH digital audio signal for both music and movie content and uses less compression than Dolby Digital for richer sound.

Wireless Subwoofer

Samsung's wireless module does away with cables running between the main unit and the subwoofer. Instead, the subwoofer connects to a compact wireless module that communicates with the main unit.

3D Depth Sound

The 3D sound feature adds depth and spaciousness to your listening experience.

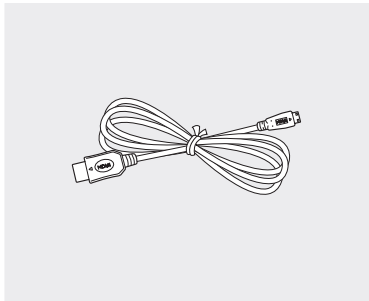
HDMI

HDMI transmits video and audio signals simultaneously, and provides a clearer picture. And the unit supply ARC function so you can listen TV sound with Crystal Surround Air Track by using only HDMI Cable. (This function is only available if an ARC-compliant TV is connected.)

WHAT'S INCLUDED

Check for the supplied accessories below.

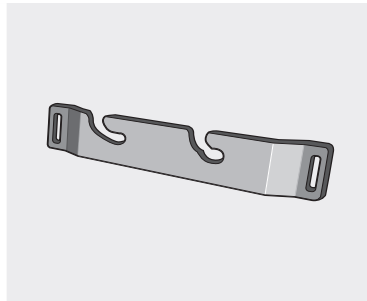
ENG



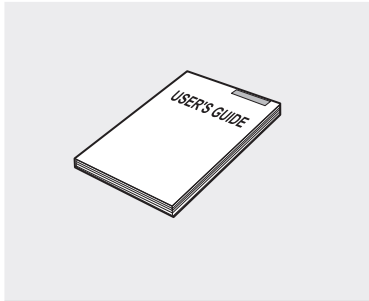
HDMI Cable (A to C type)
(AH39-01135A)



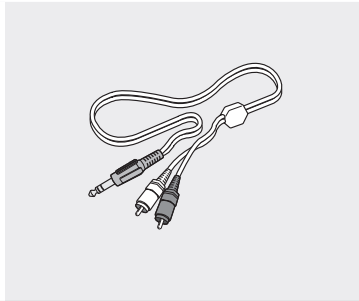
**Remote Control
/ Batteries (AAA size)**
(AH59-02330A/ 4301-000116)



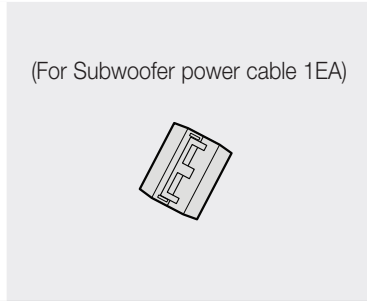
Bracket-Wall Mount
(AH61-02952A)



User Manual
(AH68-02334A)



Audio Cable
(AH39-01077A)



Toroidal Ferrite Core
(3301-000144)





- The accessories may look slightly different than those pictured above.

safety information

SAFETY WARNINGS

TO REDUCE THE RISK OF ELECTRIC SHOCK, DO NOT REMOVE THE COVER(OR BACK). NO USER-SERVICEABLE PARTS ARE INSIDE. REFER SERVICING TO QUALIFIED SERVICE PERSONNEL.

	<div style="text-align: center;"> CAUTION RISK OF ELECTRIC SHOCK DO NOT OPEN </div>	
<p>The lightning flash and Arrowhead within Triangle is a warning sign alerting you of dangerous voltage inside the product</p>	<p>CAUTION: TO REDUCE THE RISK OF ELECTRIC SHOCK, DO NOT REMOVE COVER (OR BACK) NO USER SERVICEABLE PARTS INSIDE. REFER SERVICING TO QUALIFIED SERVICE PERSONNEL.</p>	<p>The explanation point within the triangle is a warning sign alerting you of important instructions accompanying the product.</p>

WARNING

- To reduce the risk of fire or electric shock, do not expose this appliance to rain or moisture.
- To prevent injury, this apparatus must be securely attached to the floor/wall in accordance with the installation instructions.

CAUTION

- Apparatus shall not be exposed to dripping or splashing and no objects filled with liquids, such as vases, shall be placed on the apparatus.
- The Mains plug is used as a disconnect device and shall stay readily operable at any time.

This product satisfies FCC regulations when shielded cables and connectors are used to connect the unit to other equipment. To prevent electromagnetic interference with electric appliances, such as radios and televisions, use shielded cables and connectors for connections.

FCC NOTE (for U.S.A):

This equipment has been tested and found to comply with the limits for a Class B digital device, pursuant to Part 15 of the FCC Rules. These limits are designed to provide reasonable protection against harmful interference in a residential installation.

This equipment generates, uses and can radiate radio frequency energy and, if not installed and used in accordance with the instructions, may cause harmful interference to radio communications. However, there is no guarantee that interference will not occur in a particular installation.

If this equipment does cause harmful interference to radio or television reception, which can be determined by turning the equipment off and on, the user is encouraged to try to correct the interference by one or more of the following measures:

- Reorient or relocate the receiving antenna.
- Increase the separation between the equipment and receiver.
- Connect the equipment into an outlet on a circuit different from that to which the receiver is connected.
- Consult the dealer or an experienced radio/TV technician for help.

Caution : FCC regulations state that any unauthorized changes or modifications to this equipment may void the user's authority to operate it.

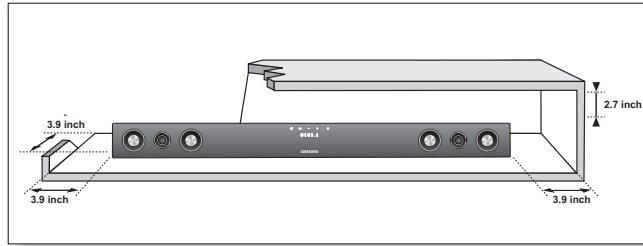
Important Safety Instructions

Read these operating instructions carefully before using the unit. Follow all the safety instructions listed below. Keep these operating instructions handy for future reference.

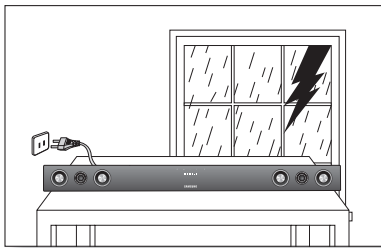
- 1) Read these instructions.
- 2) Keep these Instructions.
- 3) Heed all warnings.
- 4) Follow all instructions.
- 5) Do not use this apparatus near water.
- 6) Clean only with dry cloth.
- 7) Do not block any ventilation openings. Install in accordance with the manufacturer's instructions.
- 8) Do not install near any heat sources such as radiators, heat registers, stoves, or other apparatus (including amplifiers) that produce heat.
- 9) Do not defeat the safety purpose of the polarized or grounding-type plug. A polarized plug has two blades with one wider than the other. A grounding type plug has two blades and a third grounding prong. The wide blade or the third prong are provided for your safety. If the provided plug does not fit into your outlet, consult an electrician for replacement of the obsolete outlet.
- 10) Protect the power cord from being walked on or pinched particularly at plugs, convenience receptacles, and the point where they exit from the apparatus.
- 11) Only use attachment/accessories specified by the manufacturer.
- 12) Use only with the cart, stand, tripod, bracket, or table specified by the manufacturer, or sold with the apparatus. When a cart is used, use caution when moving the cart/apparatus combination to avoid injury from tip-over.
- 13) Unplug this apparatus during lightning storms or when unused for long periods of time.
- 14) Refer all servicing to qualified service personnel. Servicing is required when the apparatus has been damaged in any way, such as power-supply cord or plug is damaged, liquid has been spilled or objects have fallen into the apparatus, the apparatus has been exposed to rain or moisture, does not operate normally, or has been dropped.



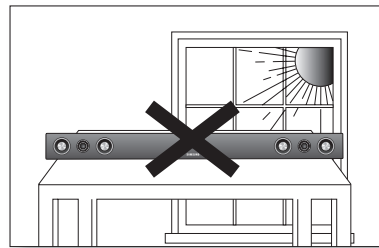
PRECAUTIONS



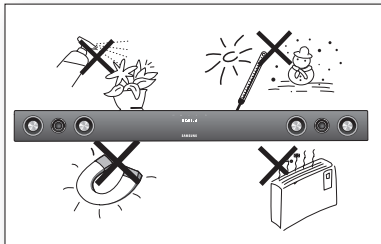
Ensure that the AC power supply in your house complies with the identification sticker located on the back of your product. Install your product horizontally, on a suitable base (furniture), with enough space around it for ventilation (3~4 inches). Make sure the ventilation slots are not covered. Do not place the unit on amplifiers or other equipment which may become hot. This unit is designed for continuous use. In order to disconnect the unit completely from the power supply, remove the main plug from the wall outlet, especially when left unused for a long period of time.



During thunderstorms, disconnect the AC main plug from the wall outlet. Voltage peaks due to lightning could damage the unit.

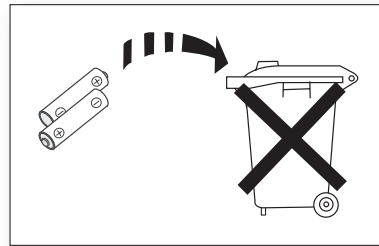


Do not expose the unit to direct sunlight or other heat sources. This could lead to overheating and malfunction of the unit.



Protect the product from moisture (i.e. vases), and excess heat (e.g. fireplace) or equipment creating strong magnetic or electric fields. Disconnect the power cable from the AC supply if the unit malfunctions. Your product is not intended for industrial use. Use of this product is for personal use only.

Condensation may occur if your product has been stored in cold temperatures. If transporting the unit during the winter, wait approximately 2 hours until the unit has reached room temperature before using.



The batteries used with this product contain chemicals that are harmful to the environment. Do not dispose of batteries in the general household trash.



contents

FEATURES	2	Features
2	3	What's included
SAFETY INFORMATION	4	Safety warnings
4	5	Precautions
GETTING STARTED	7	Before reading the user's manual
7		
DESCRIPTIONS	8	Front panel
8	9	Rear panel
REMOTE CONTROL	10	Tour of the remote control
10		
CONNECTIONS	11	Installing the wall mount
11	12	Connecting the wireless subwoofer
	13	Attaching the toroidal ferrite core to the power cord of the subwoofer
	13	Installing toroidal ferrite to subwoofer
	14	Use iPod/iPhone with a wireless dock cradle for iPod/iPhone (Sold Separately (HT-WDC10))
	14	How to link the wireless transmitter with the main unit
	15	Connecting the Crystal Surround Air Track
FUNCTIONS	17	Basic functions
17	17	Advanced functions
	20	Software upgrade
TROUBLESHOOTING	21	Troubleshooting
21		
APPENDIX	22	Specifications
22		

BEFORE READING THE USER'S MANUAL

Make sure to check the following terms before reading the user manual.

Icons that will be used in manual

Icon	Term	Definition
	Caution	This involves a case where a function does not operate or settings may be canceled.
	Note	This involves tips or instructions on the page that help each function operate.

About the use of this user's manual

- 1) Be sure to be familiar with Safety Instructions before using this product. (See page 4)
- 2) If a problem occurs, check the Troubleshooting. (See page 21)

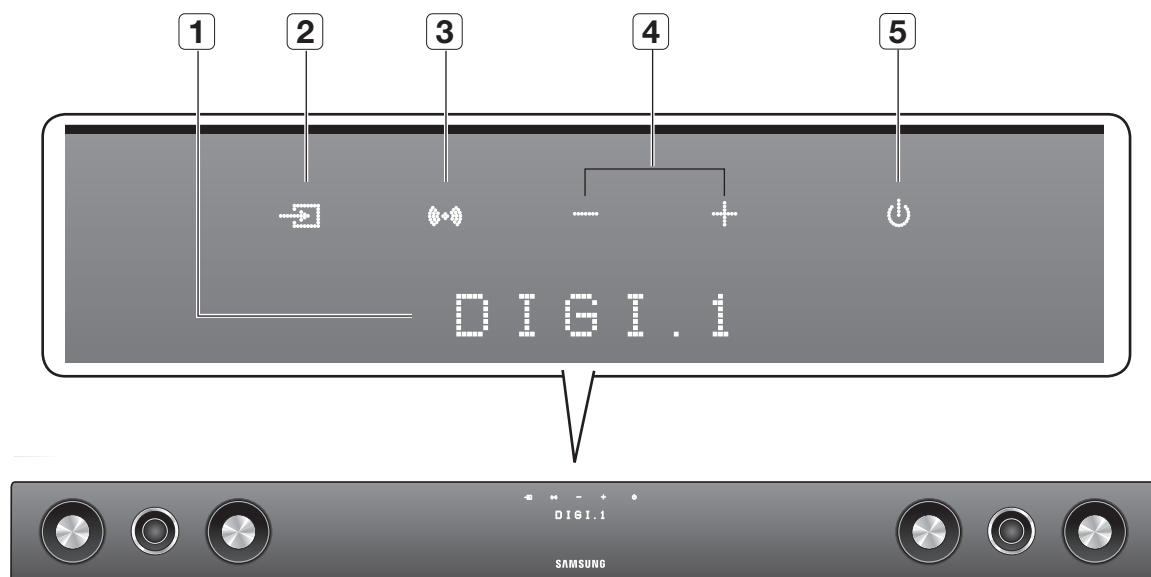
Copyright

©2011 Samsung Electronics Co.,Ltd.


All rights reserved; no part or whole of this user's manual may be reproduced or copied without the prior written permission of Samsung Electronics Co.,Ltd.

descriptions

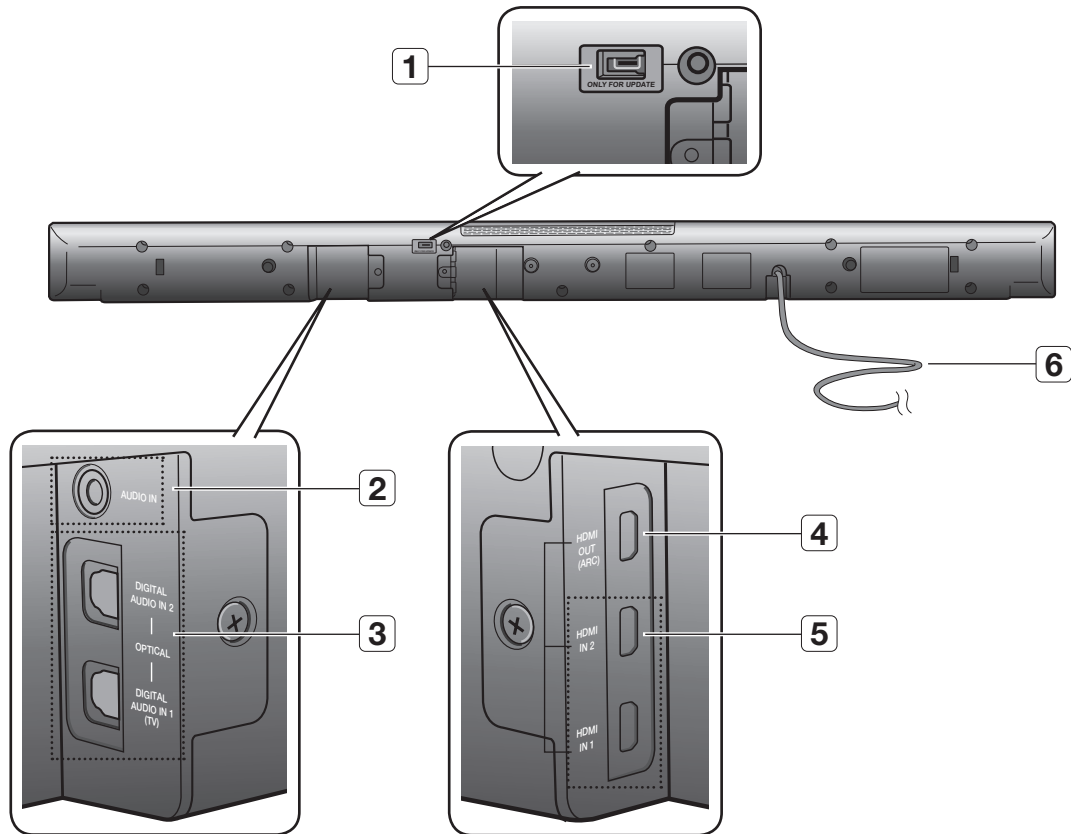
FRONT PANEL



1	DISPLAY	Displays the current mode.
2	INPUT MODE	Selects the HDMI, Optical, Audio or W.iPod input.
3	SOUND MODE	Selects the sound mode. (MUSIC, NEWS, DRAMA, CINEMA, SPORTS, GAME, PASS (Original Sound))
4	VOLUME +/-	Controls the volume level.
5	POWER BUTTON	Turns the Crystal Surround Air Track on and off.

-  When you turn on the power of this unit, there will be a 4 to 5 second delay before it reproduces sound.

REAR PANEL



1	USB PORT (FOR S/W UPDATES ONLY)	You can update this unit's software through the USB port.
2	AUDIO IN JACK	Connect to the analog output of an external device.
3	DIGITAL AUDIO IN 1,2	Connect to the digital (optical) output of an external device.
4	HDMI OUT JACK	Outputs digital video and audio signals simultaneously using an HDMI cable.
5	HDMI IN 1,2 JACKS	Receives digital video and audio signals simultaneously using an HDMI cable.
6	POWER SUPPLY CABLE	Plug the power supply cable into the AC wall outlet.

- !**
- When disconnecting the power cable from the wall outlet, hold the plug. Do not pull the cable.
 - Do not connect this unit or other components to the main power until all connections between components are complete.

remote control

TOUR OF THE REMOTE CONTROL

POWER BUTTON

Turns the Crystal Surround Air Track on and off.

TV INFO

Use this to display the TV channel information.

VOLUME

Adjusts the volume level of the unit.

MUTE

Mutes the sound from the unit. Press again to restore the sound to the previous volume level.

3D SOUND

This feature adds depth and spaciousness to the sound.

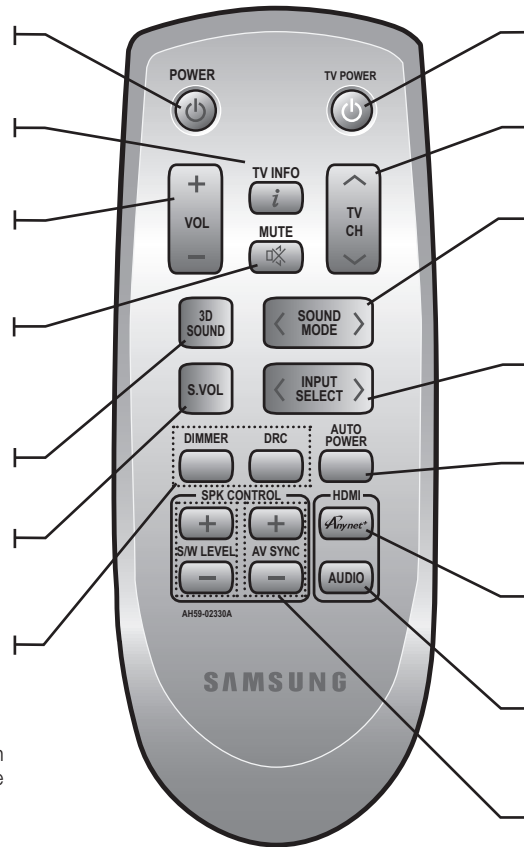
SMART VOLUME

Regulates and stabilizes the volume level against a drastic volume change.

DIMMER, DRC

You can control the brightness of the Display.

You can use this function to enjoy Dolby Digital sound when watching movies at low volume at night (Standard, MAX, MIN).



TV POWER BUTTON

Turns your Samsung TV on and off.

TV CHANNEL

Switches between the available TV channels.

SOUND MODE

Selects the sound mode. (MUSIC, NEWS, DRAMA, CINEMA, SPORTS, GAME, PASS (Original Sound))

INPUT SELECT

Selects the HDMI, the Digital (Optical), the Audio or the W. iPod input.

AUTO POWER

Synchronizes the Air Track via Optical connection via the Optical jack so it turns on automatically when you turn on your TV.

Anynet+

Anynet+ is a function that enables you to control other Samsung Devices with your Samsung TV's remote control.

AUDIO

This button allows you to choose to listen to audio from the Air track or your TV.

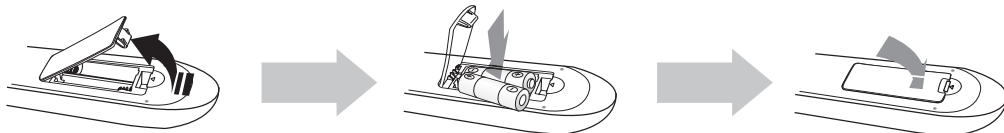
S/W LEVEL, AV SYNC

Adjusts the Subwoofer level. Used to help sync video to audio when connected to a digital TV.



- The remote control can operate TVs made by SAMSUNG only.
- Depending on the TV you are using, you may not be able to operate your TV with this remote control. In this case, operate the TV using the TV's remote control.

Installing batteries in the Remote Control



1. Lift the cover at the back of the remote control upward as shown.
2. Install two AAA size batteries. Make sure to match the "+" and "-" ends of the batteries with the diagram inside the compartment.
3. Replace the cover. Assuming typical TV usage, the batteries last for about one year.

Operation Range of the Remote Control

The remote control can be used up to approximately 23 feet (7 meters) in a straight line. It can also be operated at a horizontal angle of up to 30° from the remote control sensor.

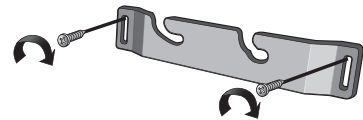
INSTALLING THE WALL MOUNT

You can use the wall mount bracket to mount this unit on a wall.

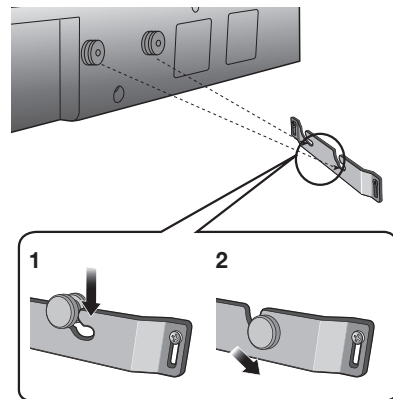
Installation Precautions

- Do not install on a place other than a vertical wall.
- For the installation, avoid a location with high temperature or humidity, or wall that cannot sustain the weight of the set.
- Check the strength of the wall. If the strength of the wall is insufficient for the product installation, make sure to reinforce the wall before the installation.
- Check the material of the wall. If the wall is made of plaster board, marble, or iron board, purchase and use the appropriate fixing screws.
- Cables connecting to external devices need to be connected to the set before installing.
- Be sure to turn off and unplug the unit before installation. Otherwise, it may cause electric shock.

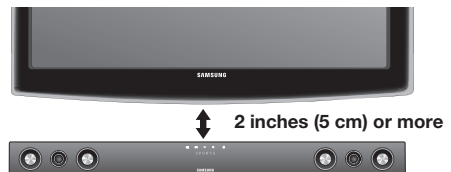
1. Place the wall mount bracket on a wall surface and then secure it with two screws (not supplied).



2. Then, fit the unit into the corresponding slots of the wall mount bracket. For secure installation, make sure the mounting studs slide firmly down into the bottom of the slots.



3. This is the completion of the suggested wall mount installation.

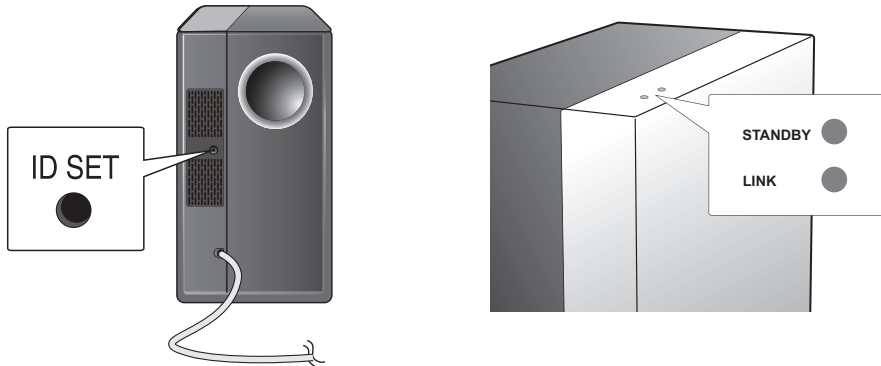


- Do not hang onto the installed unit and avoid any impact to the unit.
- Secure the unit firmly to the wall so that it does not fall off. If the unit falls off, it may result in an injury or damage to the product.
- When the unit is installed on a wall, please make sure that a child does not pull any of connecting cables, as it may cause it to fall.
- For the optimal performance in a wall mount installation, keep the speaker system at least 2 inches (5 cm) distant from the TV.

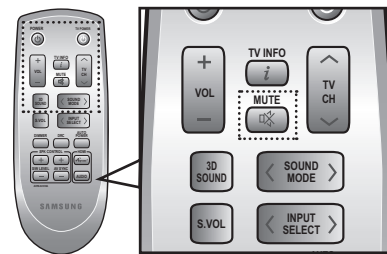
CONNECTING THE WIRELESS SUBWOOFER

The Subwoofer's linking ID is preset at the factory and the main unit and sub should link (connect wirelessly) automatically when main unit is turned on. If the link indicator does not light when main unit and subwoofer are turned on, please set the ID by following the process below.

1. Plug the power cords of the main unit and subwoofer into an AC power supply.
2. Press the **ID SET** button on the back of the subwoofer with a small, pointed object for 5 seconds.
 - The STANDBY indicator is turned off and the LINK indicator (Blue LED) blinks quickly.



3. While the main unit is powered off (STANDBY mode), press **MUTE** on the remote control for 5 seconds.
4. The Power Indicator on the main unit lights off and on, then returns to **STANDBY** mode.
 - The main unit and the subwoofer are now linked (connected).
 - The Link indicator (blue LED) on the subwoofer is turned on.
 - You can enjoy better sound from the wireless subwoofer by selecting the sound mode. (See page 18)



- Before moving or installing the product, be sure to turn off the power and disconnect the power cord.
- If the main unit is powered off, the wireless subwoofer will be in the standby mode and the STANDBY LED on the upper side will come on after 30 seconds Link indicator (Blue LED) blinking.
- If you use a device that uses the same frequency (5.2GHz or 5.8GHz) near the system, some sound interruption may be heard due to interference.
- The transmission distance of the wireless signal between the main unit and sub is about 33 ft., but may vary depending on your operating environment. If a steel-concrete or metallic wall is between the main unit and the wireless subwoofer, the system may not operate at all, because the wireless signal cannot penetrate metal.
- If the main unit doesn't make wireless connection, follow steps 1-4 above to retry the connection between the main unit and wireless subwoofer.

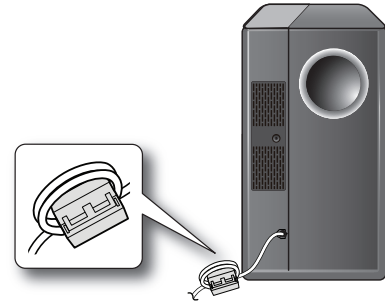


- The wireless receiving antenna is built into the wireless subwoofer. Keep the unit away from water and moisture.
- For optimal listening performance, make sure that the area around the wireless subwoofer location is clear of any obstructions.

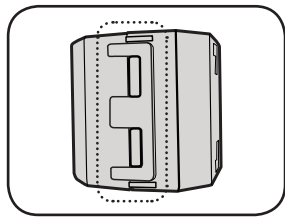
ATTACHING THE TOROIDAL FERRITE CORE TO THE POWER CORD OF THE SUBWOOFER

If you attach a Toroidal ferrite core to the power cord of the Subwoofer, it will help to prevent RF interference from radio signals.

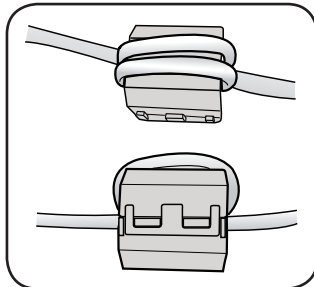
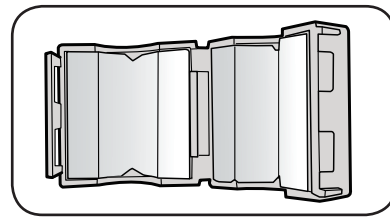
1. Pull the fixing tab of the Toroidal ferrite core to open it.
2. Make three loops in the power cable of the subwoofer.
3. Attach the Toroidal ferrite core to the Subwoofer power cord as the figure shows and press it until it clicks.



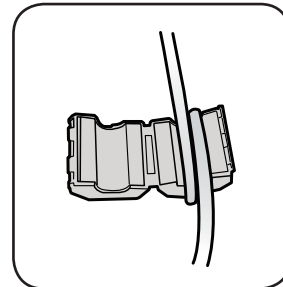
INSTALLING TOROIDAL FERRITE TO SUBWOOFER



Lift up to release the lock and open the core.



Close the lock back.



Make two rounds on the coil with the power cable.
(Start winding at 5-10cm away from the switch).

USE iPod/iPhone WITH A WIRELESS DOCK CRADLE FOR iPod/iPhone (Sold Separately (HT-WDC10))

You can enjoy finer quality of music through the speaker by sending iPod/iPhone's audio signal using a Wireless Transmitter.

To link the main unit with wireless transmitter, you have to make ID setting when both main unit and wireless transmitter are turned on.

Turn on the main unit and connect the iPod/iPhone to the Wireless transmitter.

Then press **INPUT SELECT** button on the remote control to select "W iPod" mode.

The **INPUT SELECT** mode of the main unit will switches as follows.

Repeatedly press DIGI.1 → DIGI.2 → ANALOG → W iPod → HDMI.1 → HDMI.2 (See page 19)

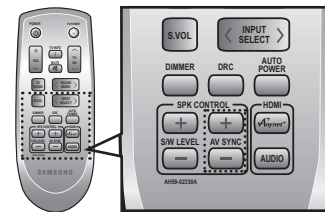
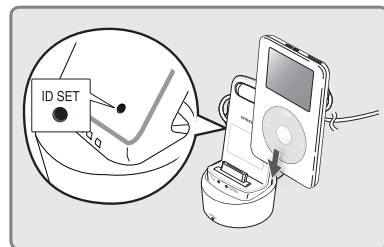
The Sound bar will not be turned off if iPod/iPhone is not connected to the Wireless Transmitter.

For more information on HT-WDC10, refer to the HT-WDC10's user manual.

HOW TO LINK THE WIRELESS TRANSMITTER WITH THE MAIN UNIT

Set an ID of the Subwoofer before setting a Transmitter ID. (See page 12)

1. Turn off your Home Theater (HW-D550, HW-D551).
2. Press the hold **"3D SOUND"** button on the remote control for 5 seconds. The standby light on the HW-D550, HW-D551 will blink once.
3. Connect the iPod/iPhone to the Wireless transmitter.
4. Turn on the iPod/iPhone. Press the **"ID SET"** button on the back of the Wireless transmitter for 5 seconds. The link light on the wireless transmitter will blink fast.
5. Turn on your Home Theater(make sure the wireless transmitter's Link LED in ON). To listen to music from your iPod/iPhone over the Home Theater, select the iPod mode as the Home Theater's source.
 - You can control the speaker volume of iPod/iPhone with a volume wheel or a volume bar.
 - When iPod/iPhone is stopped or in a power saving mode, a Wireless transmitter is turned to the Sleep Mode. When iPod/iPhone is turned to the Deep Sleep Mode, the Wireless transmitter is off.



- If you use the main unit nearby a wireless device such as a laptop computer, an AP, or Wifi, any unstable operation error can happen.
- Do not pairing the subwoofer and iPod/iPhone at the same time. If you pairing at the same time, iPod/iPhone and subwoofer may not connect to the Sound bar.

iPod/iPhone MODELS THAT CAN BE USED WITH THIS PRODUCT

iPod touch (1st, 2nd, 3rd, and 4th generation)	iPod classic	iPod with video
iPod nano (1st, 2nd, 3rd, 4th, 5th, and 6th generation)	iPhone 4	iPhone 3GS
iPhone 3G	iPhone	



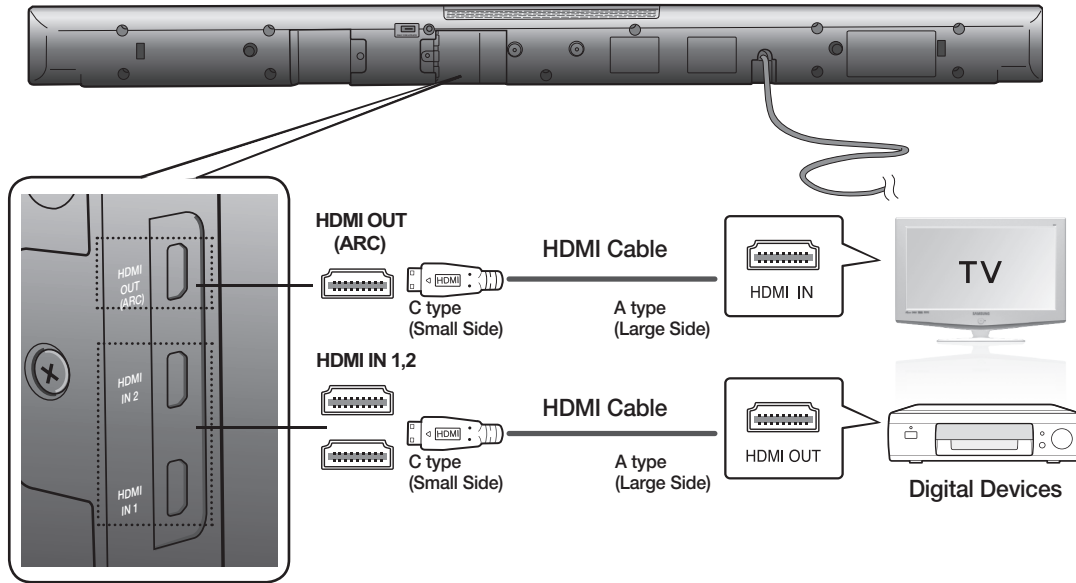
- "Made for iPod," and "Made for iPhone" mean that an electronic accessory has been designed to connect specifically to iPod or iPhone, respectively, and has been certified by the developer to meet Apple performance standards. Apple is not responsible for the operation of this device or its compliance with safety and regulatory standards. Please note that the use of this accessory with iPod or iPhone may affect wireless performance.
- iPhone, iPod, iPod classic, iPod nano, and iPod touch are trademarks of Apple Inc., registered in the U.S. and other countries.
- The volume control may not be operated normally except at the referred models. If there is any error happened at the models above, please update the software of iPod/iPhone at the latest version.



CONNECTING THE CRYSTAL SURROUND AIR TRACK

HDMI is a standard digital interface for connection to such devices as a TV, projector, DVD player, Blu-ray player, set top box and more.

HDMI removes any loss of signal from analog conversion, enabling you to enjoy video and audio sound quality as it was originally created in the digital source.



HDMI OUT (ARC)

- The ARC function will be activated in the DIGI.1 mode.
- Connect an HDMI cable from the HDMI OUT jack on the back of the product to the HDMI IN jack on your TV.
- This product supports the ARC (Audio Return Channel) functions via an HDMI cable. Note that the ARC function is supported by the HDMI OUT (ARC) port only.
- The ARC function allows digital audio to output via the HDMI OUT (ARC) port. It can be enabled only when the Air Track is connected to a TV that supports the ARC function.
- Anynet+ must be turned on.

AND,

HDMI IN 1,2

Connect an HDMI cable from the HDMI IN jack on the back of the product to the HDMI OUT jack on your digital devices.

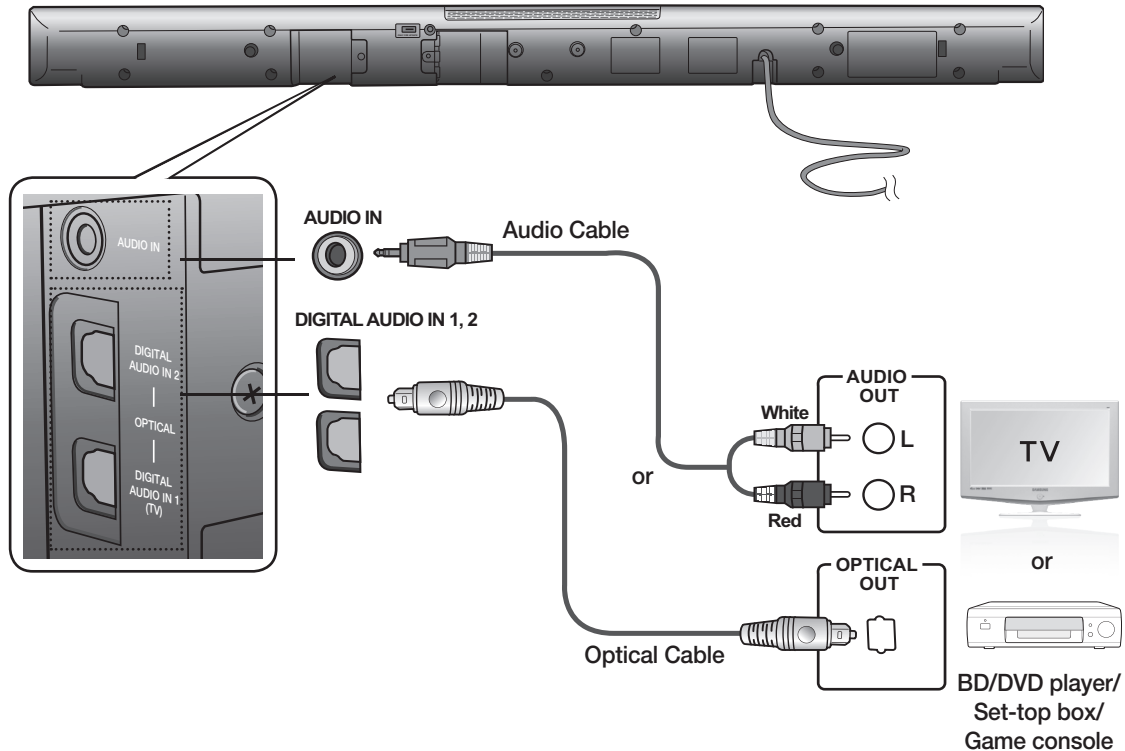


- The small side of the HDMI cable is connected with the Air Track.
- The provided accessory HDMI cable is for connecting SAT and TV. In case of connecting devices having distance longer than the provided cable, purchase an A-to-C (Mini) type cable.
- When buying HDMI cable for connecting source devices, choose A-to-C (Mini) type cable of enough length for the connection.

CONNECTING THE CRYSTAL SURROUND AIR TRACK

This section explains two ways (digital and analog) of connecting the unit to the TV.

This unit is equipped with two optical digital jacks and one audio analog jack for connecting a TV.



AUDIO IN

Connect AUDIO IN on the main unit to the AUDIO OUT of the TV or Source Device. Be sure to match connector colors.

or,

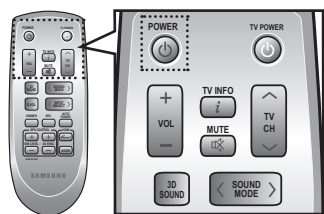
DIGITAL AUDIO IN (OPTICAL) 1,2

Connect the Digital Input on the main unit to the OPTICAL OUT of the TV or Source Device.



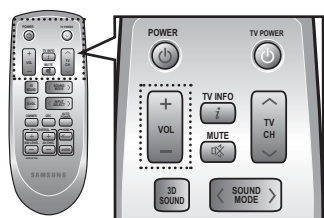
- Do not connect the power cord of this product or your TV to the wall outlet until all connections between components are complete.
- Before moving or installing this product, be sure to turn off the power and disconnect the power cord.
- If you select 'ANALOG' without connecting the Audio Cable, the set is turned off automatically after 20 minutes.
- If a TV or any device connected to Air Track with the optical cable is off and there is no digital input, the Air Track is turned off after 20 minutes. (If there has been no input signal for over 20 minutes from DIGITAL AUDIO IN 1 or 2, the Air Track will be turned off.)
- When Air Track isn't linked with HT-WDC10 model in the W.iPod mode, Air Track will turn off after 20 minutes.

BASIC FUNCTIONS



Turning the power on/off

1. Touch **POWER** (⏻) on the front panel.
or,
Press **POWER** on the remote control to turn on the power.
2. Touch **POWER** (⏻) on the front panel.
or,
Press **POWER** on the remote control again to turn off the power.



Adjusting the volume

Touch **VOLUME +/-** on the front panel.

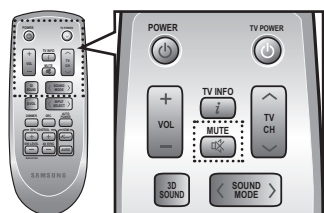
or,
Press **VOLUME +/-** on the remote control to increase or decrease the volume level.

- The numeric value of the volume level appears in the front panel display.



- The volume level increases or decreases when you press VOLUME +/-.
- If you want to enjoy the sound only from the Crystal Surround Air Track, you must turn off the TV's speakers in the Audio Setup menu of your TV. Refer to the owner's manual supplied with your TV.

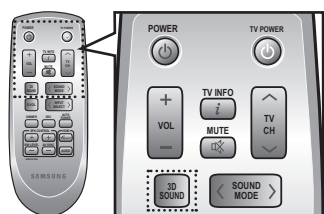
ADVANCED FUNCTIONS



Muting the sound

This is useful when answering a doorbell or telephone call.

1. Press **MUTE** (⊘) on the remote control to mute the sound.
2. Press **MUTE** on the remote control again (or press **VOLUME +/-**) to restore the sound.



Using the 3D Depth Sound function

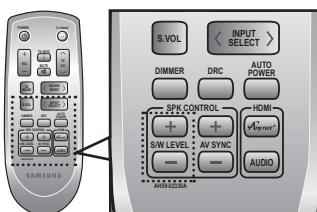
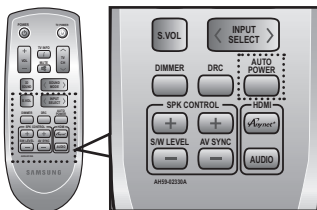
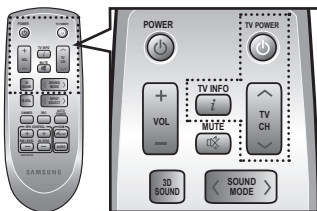
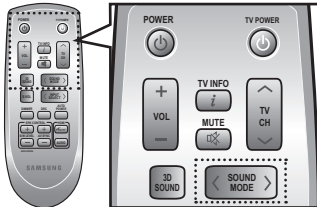
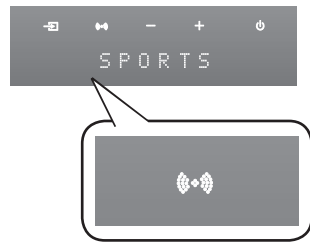
The 3D sound feature adds depth and spaciousness to the sound by using **3D SOUND** button.

Press **3D SOUND** on the remote control.

- Each time the button is pressed, the selection changes as follows :
3D SOUND ON ➔ 3D SOUND OFF



- When you turn on the 3D Depth Sound, the Sound Mode will automatically change to PASS.



Using the sound mode

You can select from 7 different sound modes (MUSIC, NEWS, DRAMA, CINEMA, SPORTS, GAME, PASS (Original Sound)) depending on the type of sources you want to enjoy.

Press **SOUND MODE** on the remote control ◀,▶ or touch **SOUND MODE** (🔊) on the front panel repeatedly to select the sound mode you want.

- Select **PASS** mode if you want to enjoy the original sound.



- It is recommended that you select a Sound Mode based on the source material and your personal taste.
- When you choose the Sound Mode (except PASS), the 3D Depth Sound will automatically be turned OFF.

Using the TV functions

1. Press **TV POWER** on the remote control of this unit.
2. Press **TV INFO** on the remote control to display the TV channel information.
3. Press **TV CH** on the remote control to select the TV channel.



- The remote control can operate TVs made by SAMSUNG only.

Using the AUTO POWER LINK function

The Crystal Surround Air Track is automatically turned on when you turn the power on of a TV or any device connected to the Air Track with the optical cable.

Press **AUTO POWER** on the remote control of this unit.

- Auto power link function turns on and off each time you press **AUTO POWER**.

AUTO POWER LINK	Display
ON	POWER LINK ON
OFF	POWER LINK OFF

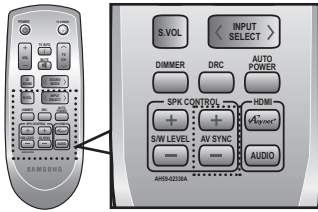


- If a TV or any device connected to Air Track with the optical cable is off and there is no digital input, the Air Track is turned off after 20 minutes.
- Only if Anynet+ function is 'off', the unit will work.

Using the S/W LEVEL function

You can control the base volume with S/W Level button on the Remote control.

1. Press the **S/W LEVEL** button on the Remote control.
2. **"SW 00"** is appeared on the Display.
3. Press **"+"** on the **LEVEL** key if you want to increase the subwoofer volume. You can set it from SW+01 to SW+06.
4. Press **"-"** on the **LEVEL** key if you want to decrease the subwoofer volume. You can set it from SW-01 to SW-06.

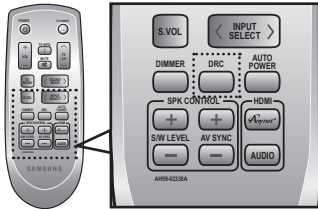


Using the AV SYNC function

Video may look slower than the audio if it is connected with digital TV. If this occurs, adjust the audio delay time to match the video.

Press **AV SYNC +/-** button on the remote control of this unit.

- You can use +, - button to set the audio delay time between 0 ms and 300 ms.

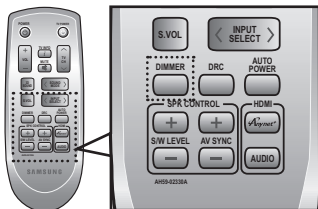


Using the DRC function

This feature balances the range between the loudest and quietest sounds. You can use this function to enjoy Dolby Digital sound when watching movies at low volume at night.

Press **DRC** on the remote control of this unit.

- Each time the button is pressed, the selection changes as follows :
DRC MIN ➔ DRC STANDARD ➔ DRC MAX

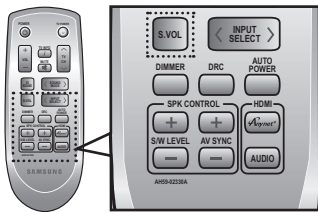


Using the DIMMER function

This feature control the brightness of the Display.

Press **DIMMER** on the remote control of this unit.

- Each time the button is pressed, the selection changes as follows :
DIMMER ON ➔ DIMMER OFF

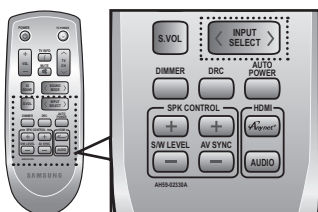
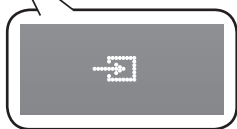


Using the S.VOLUME function

This will regulate and stabilize the volume level against a drastic volume change in case of a channel change or scene transition.

Press **S.VOL** on the remote control of this unit.

- Each time the button is pressed, the selection changes as follows :
SMART VOLUME ON ➔ SMART VOLUME OFF



Using the input mode

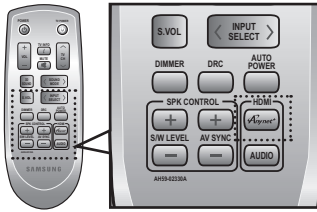
You can select either HDMI, Optical Digital, Audio input or W.iPod input.

Press **INPUT SELECT** on the remote control <, > or touch **INPUT SELECT** (INPUT SELECT) on the front panel repeatedly to select the HDMI, Optical Digital, Audio input or W.iPod input.

Input mode	Display
Optical Digital input	DIGI.1
	DIGI.2
Audio input	ANALOG
iPod mode	W.iPod
HDMI input	HDMI.1
	HDMI.2



- Although it appears on the input mode display, iPod connection is not possible with this model. It is only available with model HT-WDC10 (sold separately)



Using the Anynet+(HDMI-CEC) function

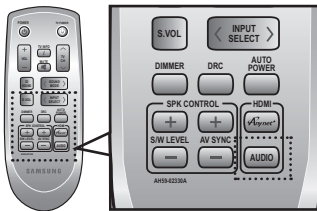
Anynet+ is a function that enables you to control other Samsung Devices with your Samsung TV's remote control.

Anynet+ function turns on and off each time you press **Anynet+**.

1. Connect the product to a Samsung TV with the HDMI cable. (See page 15)
2. Set the Anynet+ function on your TV. (See the TV instruction manual for more information.)



- The Anynet+ function supports some buttons of the remote control. (TV POWER, TV INFO, TV CH)
- Depending on your TV, certain HDMI output resolutions may not work.
- Please refer to the user's manual of your TV. Please check the **Anynet+** logo (If your TV has an **Anynet+** logo, then it supports Anynet+ function.)



AUDIO button

This button enables you to select between listening to audio from your TV or audio from the Air Track when connected via HDMI.

Press **AUDIO** on the remote control of this unit.

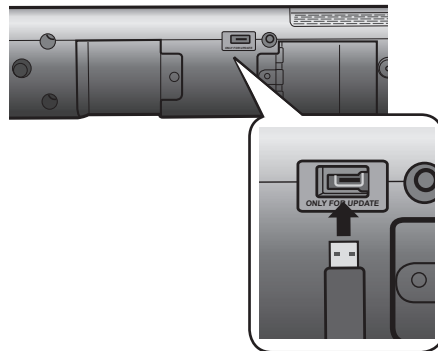
AUDIO MODE	MODE	Scroll Display	Display
HDMI IN	TV	HDMI AUDIO TV	SND TV
	AVR	HDMI AUDIO AVR	HDMI
ARC	TV	SOUND TV	S MUTE
	AVR	SOUND AVR	TV ARC

SOFTWARE UPGRADE

Samsung may offer upgrades for the Crystal Surround Air Track's system's firmware in the future.

Please visit Samsung.com or contact the Samsung call center to receive information about downloading upgrades and using a USB drive.

Upgrades will be possible by connecting a USB drive to the USB port located on your Air Track.



- Insert a USB drive containing the firmware upgrade into the USB port on the back of the main unit.
- Please be careful to not disconnect the power or remove the USB drive while upgrades are being applied. The main unit will turn off automatically after completing the firmware upgrade. When software is upgraded, settings you have made will return to their default (factory) settings. We recommend you write down your settings so that you can easily reset them after the upgrade.
- If the firmware fails to upgrade, we recommend formatting the USB data in FAT16 and trying again.
- For upgrading purposes, do not format USB data in NTFS because it is not a supported file system.
- Depending on the manufacturer, the USB may not be supported.

troubleshooting

Before requesting service, please check the following.

Symptom	Check	Remedy
The unit will not turn on.	<ul style="list-style-type: none">• Is the power cord plugged into the outlet?	<ul style="list-style-type: none">• Connect the power plug to the outlet.
A function does not work when the button is pressed.	<ul style="list-style-type: none">• Is there static electricity in the air?	<ul style="list-style-type: none">• Disconnect the power plug and connect it again.
Sound is not produced.	<ul style="list-style-type: none">• Is the unit properly connected to your TV?• Is the Mute function on?• Is the volume set to minimum?	<ul style="list-style-type: none">• Connect it correctly.• Press the Mute button to cancel the function.• Adjust the volume.
Picture does not appear on a TV when the function is selected.	<ul style="list-style-type: none">• Is the TV connected properly?	<ul style="list-style-type: none">• Connect it correctly.
Remote control does not work.	<ul style="list-style-type: none">• Are the batteries drained?• Is the distance between remote control and main unit too far?	<ul style="list-style-type: none">• Replace with new batteries.• Operate at a close distance.
The sound from the left/right channels is reversed.	<ul style="list-style-type: none">• Are the left/right audio output cables from the TV connected properly?	<ul style="list-style-type: none">• Check the left/right channel and connect it/them correctly.

appendix

SPECIFICATIONS

Model name	HW-D550/ HW-D551		
GENERAL	Power supply	AC 120V, 60Hz	
	Standby power consumption	0.75W	
	Power consumption	Main unit	45W
		Subwoofer	20W
	Weight	Main unit	4.41 lbs
		Subwoofer	12.01lbs
	Dimensions (W x H x D)	Main unit	41.65 x 3.15 x 1.58 inches
		Subwoofer	6.89 x 13.78 x 11.61 inches
	Operating temperature range	+41°F to +95°F	
Operating humidity range	10 % to 75 %		
AMPLIFIER	Rated output power	Main unit	80W/CH, 4Ω, THD = 10%, 1kHz
		Subwoofer	150W, 3Ω, THD = 10%, 100Hz
	Input sensitivity/Impedance	570mV/20KΩ	
	S/N ratio (analog input)	70dB	
	Separation(1kHz)	70dB	
FREQUENCY RESPONSE	Analog input	20Hz~20kHz(±3dB)	
	Digital input/48kHz PCM	20Hz~20kHz(±3dB)	

* S/N ratio, distortion, separation and usable sensitivity are based on measurement using AES (Audio Engineering Society) guidelines.

*: Nominal specification

- Samsung Electronics Co., Ltd reserves the right to change the specifications without notice.

- Weight and dimensions are approximate.

WARRANTY

LIMITED WARRANTY TO ORIGINAL PURCHASER

This SAMSUNG brand product, as supplied and distributed by Samsung Electronics America, Inc. (SAMSUNG) and delivered new, in the original carton to the original consumer purchaser, is warranted by SAMSUNG against manufacturing defects in materials and workmanship for a limited warranty period of:

One (1) Year Parts and Labor*

(*90 Days Parts and Labor for Commercial Use)

This limited warranty begins on the original date of purchase, and is valid only on products purchased and used in the United States. To receive warranty service, the purchaser must contact SAMSUNG for problem determination and service procedures. Warranty service can only be performed by a SAMSUNG authorized service center. The original dated bill of sale must be presented upon request as proof of purchase to SAMSUNG or SAMSUNG's authorized service center. Transportation of the product to and from the service center is the responsibility of the purchaser.

SAMSUNG will repair or replace this product, at our option and at no charge as stipulated herein, with new or reconditioned parts or products if found to be defective during the limited warranty period specified above. All replaced parts and products become the property of SAMSUNG and must be returned to SAMSUNG. Replacement parts and products assume the remaining original warranty, or ninety (90) days, whichever is longer.

SAMSUNG's obligations with respect to software products distributed by SAMSUNG under the SAMSUNG brand name are set forth in the applicable end user license agreement. Non-SAMSUNG hardware and software products, if provided, are on an "AS IS" basis. Non-SAMSUNG manufacturers, suppliers, publishers, and service providers may provide their own warranties.

This limited warranty covers manufacturing defects in materials and workmanship encountered in normal, and except to the extent otherwise expressly provided for in this statement, noncommercial use of this product, and shall not apply to the following, including, but not limited to: damage which occurs in shipment; delivery and installation; applications and uses for which this product was not intended; altered product or serial numbers; cosmetic damage or exterior finish; accidents, abuse, neglect, fire, water, lightning or other acts of nature; use of products, equipment, systems, utilities, services, parts, supplies, accessories, applications, installations, repairs, external wiring or connectors not supplied and authorized by SAMSUNG, or which damage this product or result in service problems; incorrect electrical line voltage, fluctuations and surges; customer adjustments and failure to follow operating instructions, cleaning, maintenance and environmental instructions that are covered and prescribed in the instruction book; product removal or reinstallation; reception problems and distortion related to noise, echo, interference or other signal transmission and delivery problems. SAMSUNG does not warrant uninterrupted or error-free operation of the product.

THERE ARE NO EXPRESS WARRANTIES OTHER THAN THOSE LISTED AND DESCRIBED ABOVE, AND NO WARRANTIES WHETHER EXPRESS OR IMPLIED, INCLUDING, BUT NOT LIMITED TO, ANY IMPLIED WARRANTIES OF MERCHANTABILITY OR FITNESS FOR A PARTICULAR PURPOSE, SHALL APPLY AFTER THE EXPRESS WARRANTY PERIODS STATED ABOVE, AND NO OTHER EXPRESS WARRANTY OR GUARANTY GIVEN BY ANY PERSON, FIRM OR CORPORATION WITH RESPECT TO THIS PRODUCT SHALL BE BINDING ON SAMSUNG. SAMSUNG SHALL NOT BE LIABLE FOR LOSS OF REVENUE OR PROFITS, FAILURE TO REALIZE SAVINGS OR OTHER BENEFITS, OR ANY OTHER SPECIAL, INCIDENTAL OR CONSEQUENTIAL DAMAGES CAUSED BY THE USE, MISUSE OR INABILITY TO USE THIS PRODUCT, REGARDLESS OF THE LEGAL THEORY ON WHICH THE CLAIM IS BASED, AND EVEN IF SAMSUNG HAS BEEN ADVISED OF THE POSSIBILITY OF SUCH DAMAGES. NOR SHALL RECOVERY OF ANY KIND AGAINST SAMSUNG BE GREATER IN AMOUNT THAN THE PURCHASE PRICE OF THE PRODUCT SOLD BY SAMSUNG AND CAUSING THE ALLEGED DAMAGE. WITHOUT LIMITING THE FOREGOING, PURCHASER ASSUMES ALL RISK AND LIABILITY FOR LOSS, DAMAGE OR INJURY TO PURCHASER AND PURCHASER'S PROPERTY AND TO OTHERS AND THEIR PROPERTY ARISING OUT OF THE USE, MISUSE OR INABILITY TO USE THIS PRODUCT SOLD BY SAMSUNG NOT CAUSED DIRECTLY BY THE NEGLIGENCE OF SAMSUNG. THIS LIMITED WARRANTY SHALL NOT EXTEND TO ANYONE OTHER THAN THE ORIGINAL PURCHASER OF THIS PRODUCT, IS NONTRANSFERABLE AND STATES YOUR EXCLUSIVE REMEDY.

Some states do not allow limitations on how long an implied warranty lasts, or the exclusion or limitation of incidental or consequential damages, so the above limitations or exclusions may not apply to you. This warranty gives you specific legal rights, and you may also have other rights which vary from state to state.

To obtain warranty hardware service, please contact SAMSUNG customer care center.

Contact SAMSUNG WORLD WIDE

If you have any questions or comments relating to Samsung products, please contact the SAMSUNG customer care center.

Area	Contact Center ☎	Web Site
■ North America		
Canada	1-800-SAMSUNG (726-7864)	www.samsung.com
Mexico	01-800-SAMSUNG (726-7864)	www.samsung.com
U.S.A	1-800-SAMSUNG (726-7864)	www.samsung.com
■ Latin America		
Argentina	0800-333-3733	www.samsung.com
Brazil	0800-124-421 / 4004-0000	www.samsung.com
Chile	800-SAMSUNG (726-7864)	www.samsung.com
Colombia	01-8000112112	www.samsung.com
Costa Rica	0-800-507-7267	www.samsung.com
Dominica	1-800-751-2676	www.samsung.com
Ecuador	1-800-10-7267	www.samsung.com
El Salvador	800-6225	www.samsung.com
Guatemala	1-800-299-0013	www.samsung.com
Honduras	800-7919267	www.samsung.com
Jamaica	1-800-234-7267	www.samsung.com
Nicaragua	00-1800-5077267	www.samsung.com
Panama	800-7267	www.samsung.com
Peru	0-800-777-08	www.samsung.com
Puerto Rico	1-800-682-3180	www.samsung.com
Trinidad & Tobago	1-800-SAMSUNG (726-7864)	www.samsung.com
Venezuela	0-800-100-5303	www.samsung.com
■ Europe		
Albania	42 27 5755	-
Austria	0810 - SAMSUNG (7267864, € 0.07/min)	www.samsung.com
Belgium	02-201-24-18	www.samsung.com/ be (Dutch) www.samsung.com/ be_fr (French)
Bosnia	05 133 1999	-
Bulgaria	07001 33 11	www.samsung.com
Croatia	062 SAMSUNG (062 726 7864)	www.samsung.com
Czech	800-SAMSUNG (800-726786) Samsung Zrt., česká organizační složka, Oasis Florenc, Sokolovská394/17, 180 00, Praha 8	www.samsung.com
Denmark	70 70 19 70	www.samsung.com
Finland	030 - 6227 515	www.samsung.com
France	01 48 63 00 00	www.samsung.com
Germany	01805 - SAMSUNG (726-7864 € 0,14/Min)	www.samsung.com
Hungary	06-80-SAMSUNG (726-7864)	www.samsung.com
Italia	800-SAMSUNG (726-7864)	www.samsung.com
Kosovo	+381 0113216899	-
Luxemburg	261 03 710	www.samsung.com
Macedonia	023 207 777	-
Montenegro	020 405 888	-
Netherlands	0900-SAMSUNG (0900-7267864) (€ 0,10/Min)	www.samsung.com
Norway	815-56 480	www.samsung.com
Poland	0 801 1SAMSUNG (172678) / 022-607-93-33	www.samsung.com
Portugal	80820-SAMSUNG (726-7864)	www.samsung.com
Rumania	1. 08010 SAMSUNG (72678) - doar din rețeaua Romtelecom, tarif local 2. 021.206.01.10 - din orice rețea, tarif normal	www.samsung.com

Area	Contact Center ☎	Web Site
Serbia	0700 Samsung (0700 726 7864)	www.samsung.com
Slovakia	0800-SAMSUNG (726-7864)	www.samsung.com
Spain	902-1-SAMSUNG (902 172 678)	www.samsung.com
Sweden	0771 726 7864 (SAMSUNG)	www.samsung.com
Switzerland	0848-SAMSUNG (7267864, CHF 0.08/min)	www.samsung.com/ch www.samsung.com/ ch_fr(French)
U.K	0330 SAMSUNG (7267864)	www.samsung.com
Eire	0818 717100	www.samsung.com
Lithuania	8-800-77777	www.samsung.com
Latvia	8000-7267	www.samsung.com
Estonia	800-7267	www.samsung.com
■ CIS		
Russia	8-800-555-55-55	www.samsung.com
Georgia	8-800-555-555	-
Armenia	0-800-05-555	-
Azerbaijan	088-55-55-555	-
Kazakhstan	8-10-800-500-55-500 (GSM: 7799)	www.samsung.com
Uzbekistan	8-10-800-500-55-500	www.samsung.com
Kyrgyzstan	00-800-500-55-500	www.samsung.com
Tadjikistan	8-10-800-500-55-500	www.samsung.com
Ukraine	0-800-502-000	www.samsung.ua www.samsung.com/ ua_ru
Belarus	810-800-500-55-500	-
Moldova	00-800-500-55-500	-
■ Asia Pacific		
Australia	1300 362 603	www.samsung.com
New Zealand	0800 SAMSUNG (0800 726 786)	www.samsung.com
China	400-810-5858 / 010-6475 1880	www.samsung.com
Hong Kong	(852) 3698 4698	www.samsung.com/hk www.samsung.com/ hk_en/
India	3030 8282 / 1800 110011 / 1800 3000 8282 / 1800 266 8282	www.samsung.com
Indonesia	0800-112-8888 / 021-5699-7777	www.samsung.com
Japan	0120-327-527	www.samsung.com
Malaysia	1800-88-9999	www.samsung.com
Philippines	1-800-10-SAMSUNG(726-7864) / 1-800-3-SAMSUNG(726-7864) / 1-800-8-SAMSUNG(726-7864) / 02-5805777	www.samsung.com
Singapore	1800-SAMSUNG (726-7864)	www.samsung.com
Thailand	1800-29-3232 / 02-689-3232	www.samsung.com
Taiwan	0800-329-999	www.samsung.com
Vietnam	1 800 588 889	www.samsung.com
■ Middle East		
Bahrain	8000-4726	www.samsung.com
Egypt	08000-726786	www.samsung.com
Jordan	800-22273	www.samsung.com
Morocco	080 100 2255	www.samsung.com
Oman	800-SAMSUNG (726-7864)	www.samsung.com
Saudi Arabia	9200-21230	www.samsung.com
Turkey	444 77 11	www.samsung.com
U.A.E	800-SAMSUNG (726-7864)	www.samsung.com
■ Africa		
Nigeria	0800-SAMSUNG (726-7864)	www.samsung.com
South Africa	0860-SAMSUNG (726-7864)	www.samsung.com



QUESTIONS OR COMMENTS?

COUNTRY	CALL	OR VISIT US ONLINE AT	WRITE
IN THE US	1-800-SAMSUNG (7267864)	www.samsung.com/us	Samsung Electronics America, Inc. 85 Challenger Road Ridgefield Park, NJ 07660-0511

Code no. AH68-02334A(00)